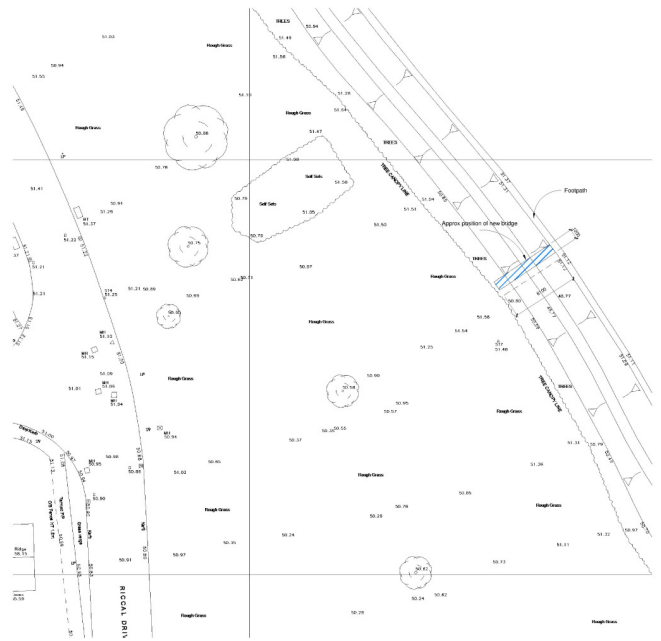




1 Site Plan - Bridge Plan
1:200

Notes
Footbridge design to be by specialist to approval of North Yorkshire County Council (NTCC) Public Rights of Way Department (PRoW). Gravel path to be graded to design of footbridge as required.



2 01 Ground Floor Plan - Just Topo
1:200

Notes
Size of footbridge to specialist design to NYCC and PRoW officer approval. Timber Kit bridge to approved design and standard details. Sizes shown above for location purposes only.

nicol thomas

Rev	Date	Description
A	09-02-18	Footbridge to PRoW sizes
B	16-04-18	Plots 14-18 moved east

nicol thomas
architects, interior designers, landscape architects, civil engineers
Incorporated in England and Wales, Reg No. 274846
Company No. 020 0902 0728 (VAT Registered) No. 020 0902 0728
10 North Wood, Scarborough, North Yorkshire, YO11 1JG
Tel: 01753 836100 Fax: 01753 836101
www.nicolthomas.co.uk

REVISIONS
REVISION NO. 16
DATE 16/04/18
DESCRIPTION: REVISED PLAN
DRAWN BY: AS
CHECKED BY: GRF

Do not quote this drawing. All dimensions must be checked and confirmed by the contractor. Any change or correction to this drawing must be approved by the architect. This drawing and design is the property of Nicol Thomas and may not be reproduced, copied, or used in any way without the prior written consent of Nicol Thomas.

REVISED PLAN

Client	Clasby
Job	Riscul Drive, Nalmsby
Drawing title	Footbridge Sketch
Project number	M4186 16
Scale	1:200 @ A1
Date	02/01/18
Drawn by	AS
Checked by	GRF